

Sri Guru Harkrishan Public School, Ludhiana

Class-VII

Subject- English

Session-2022-23

Time- 1.5 hrs.

Max. Marks-40

Section-A (Reading)

Q1. Read the passage and answer the following questions.

5 marks

1. Animals can go for weeks without food and for days without water. But without oxygen they die in a few minutes. Oxygen is a chemical element. It is the most abundant element on earth and it is all around you. It makes up about one -fifth of the air(rest of the air is nitrogen.)
2. Oxygen combines with almost all other elements in living creatures oxygen is combined with hydrogen carbon and other substances in a human being it accounts for $\frac{2}{3}$ of the body weight at normal temperature oxygen combines with other elements very slowly. When oxygen combines with other elements new substances, call oxides are formed. The combining process is called oxidation oxidation goes on all the time in living creatures. Food is the fuel of living cells. As food is oxidised, energy is released. This energy is used for moving the body and for building new body substances the slow oxidation in living creatures is often called internal respiration.
3. In man, oxygen is breathed in through the lungs. From the lungs oxygen passes into the blood and is carried to all parts of the body. The breathing process supplies the cells with oxygen for respiration. So we need oxygen for the energy to keep the body functioning. People who have trouble in breathing are often placed in oxygen tents. Here the patients breath In air that is from 40 to 50% oxygen. The patient thus uses little energy to get the oxygen he needs.
4. While oxygen is continuously being removed from the air, the supply of oxygen never seems to get used up. Plants give off oxygen as they make food and this helps keep up the supply of oxygen.
 - a. What kind of element is oxygen?
 - b. Why food is called the fuel of living cells?
 - c. What is the use of oxygen tents?
 - d. The slow oxidation in living creatures is called _____?
 - e. Find antonym of "Collect" _____ (para 4)

Section- B (Writing and Grammar)

Q2. Suppose you are Arun Singh from Mayor World School, Jalandhar. You study in class VII-G. Write an application to the Principal for complaining about un-hygienic conditions of toilets in your school. **4 marks**

Q3. You are Kiran/Karan, school captain of Kabir Model school, Rohtak. Write a notice informing the students about a debate competition to be held on 22nd December. **4 marks**

Q4. Do as directed **8 marks**

(i) Circle the adverbs and state their kind.

(a) We were sitting outside.

(b) When did the flight land?

(ii) Fill in the blanks with the present Perfect Tense/Present Continuous Tense form of the verbs given in the brackets

(a) My friend _____ his purse. (lose)

(b) The dog is _____ its tail. (wag)

(iii) Fill in the blanks with a modal verbs from the brackets.

(a) You _____ regret this. (May/ shall)

(b) He _____ take rest if he is tired. (would/ can)

(iv) Fill in the blanks with a, an or the where ever required.

(a) _____ house has not been white washed for long.

(b) Today _____ hen laid eggs in the garden.

SECTION-C (Literature)

Q5. Read the extract and answer the following questions: **3 marks**

‘Never saw I, never felt, a calm so deep’

The river glideth at his own sweet will:

Dear God The very houses seem asleep;

And all that mighty heart is lying still

(a) Name of the poem and the poet.

(b) What do you understand by “Mighty heart is lying still”

(c) Write the meaning of glideth.

Q6. Write the answers of the following questions (any four) **8 marks**

(a) Who found the blue diamond and where?

(b) What is meant by houses seem asleep?

(c) Where did Roxy and his parents live?

(d) How did the poet feel in the company of the daffodils?

(e) According to Mama Dinosaur, What happened to the trees?

(f) Where did James Ryder hide the blue carbuncle after stealing it?

Q7. Write the meaning of following words: (any four) **4 marks**

(a) steep

(b) deduced

(c) bliss

(d) flocked

(e) bare

(f) amazed

Q8. Write the answers of the following questions in 30-40 words. (any one) **4 marks**

(a) Why did Ryder fall on his knees in front of Holmes?

(b) How did the engine driver try to drive away Roxy from the railway tracks?

Assignment - 1

M.M. - 20
Class - 7 (English)

Ques 1) An anagram is a word made by using letters of another word in a different order.

Sort out the following anagrams. Look at the examples first :-

eg:- The name of an animal - toga : Goat. (5)

- 1) A place where you sleep - REBODOM _____
- 2) A member of a family - RESIST _____
- 3) A part of a body - FRINGE _____
- 4) The name of the country - PAINS _____
- 5) Something you can open - ODOR _____

Ques 2) Fill in the blanks with the correct form of (4) adjectives :-

- 1) Rohan is the _____ (bad/worst) golfer in the world.
- 2) London is _____ (far/farther) than Paris, but Moscow is the _____ (farther/farthest).
- 3) Helen's clothes are _____ (more fashionable/fashionable) than Susan's.
- 4) My friends arrived _____ (early/earlier) than we expected.

Ques 3) Rearrange the following words to form meaningful sentences :- (4)

- 1) Eyes/beautiful/and precious/from God/to us/are/gift.
- 2) Thankful/to God/should/we/be/it/for.
- 3) is/good/early/for rising/health.
- 4) to/bed/early/is good/also/a/habit.

Assignment-2

M.M-20
Class-7th
(English).

Ques1) We know ^{that} trees are very useful for us. In fact, we cannot survive without trees. Taking ideas from the hints given below, write a paragraph in about 150 words on 'Value of Trees'.

Hints → Trees - our best friends. — oxygen — shade — wood for furniture — medicines — material for industries — absorb CO_2 — fruits — rain — fuel. (5)

Ques2) You are Priyanka Chaudhary, the Head Girl of Sunshine Continental School, Jaipur. Write a notice informing the students of 6th to 8th classes about a week long Badminton Coaching Camp to be held in your school during winter break. Invent details like dates, timings, fees, names of coaching faculty etc. (5)

Ques3) It was Sunday and you enjoyed a lot with your family at a picnic. Describe the day's events and your feelings too, in the form of a diary entry. (5)

Ques4) Write a letter to your friend, describing the annual Prize-giving function of your school. (5)

Shri Guru Harkrishan Public School

December Exam 2022

Paper – Punjabi

Class : 7th

MM. 40

1. ਲੇਖ - ਕੋਈ ਇੱਕ ਲੇਖ ਕਰੋ। (6)
ਮੇਰਾ ਸਕੂਲ, ਦੀਵਾਲੀ, ਗੁਰੂ ਨਾਨਕ ਦੇਵ ਜੀ
2. ਪੱਤਰ - ਇੱਕ ਕਰੋ। (5)
ਮਿੱਤਰ ਨੂੰ ਪਾਸ ਹੋਣ ਤੇ ਵਧਾਈ ਪੱਤਰ ਲਿਖੋ। ਜਾਂ
ਗਰਮੀਆਂ ਦੀਆਂ ਛੁੱਟੀਆਂ ਵਿਚ ਪਹਾੜੀ ਸਥਾਨ ਤੇ ਜਾਣ ਲਈ ਆਗਿਆ ਲੈਣ ਦਾ ਪੱਤਰ ਲਿਖੋ।
3. ਕਹਾਣੀ - ਕੋਈ ਇੱਕ ਕਹਾਣੀ ਕਰੋ। : (5)
ਚਲਾਕ ਲੁੰਬੜੀ ਜਾਂ ਛੁਪਿਆ ਮਜ਼ਾਨਾ
4. ਪ੍ਰਸ਼ਨਾਂ ਦੇ ਉੱਤਰ ਇੱਕ ਦੋ ਸਤਰਾਂ ਵਿਚ ਦਿਉ। (1x3=3)
 1. ਨੰਦੇੜ ਦੀ ਧਰਤੀ ਨੂੰ ਕਿਸ ਗੁਰੂ ਜੀ ਦੀ ਛੋਹ ਪ੍ਰਾਪਤ ਹੈ?
 2. ਅਧਿਆਪਕ ਕਿਸ ਚੀਜ਼ ਦਾ ਚਾਨਣ ਮੁਨਾਰਾ ਹੈ?
 3. 'ਤਪਦੀਆਂ ਛਾਵਾਂ' ਪਾਠ ਵਿਚ ਕਿਹੜੇ-ਕਿਹੜੇ ਪੰਛੀਆਂ ਦੇ ਨਾਮ ਆਏ ਹਨ - ਕੋਈ ਚਾਰ ਪੰਛੀਆਂ ਦੇ ਨਾਲ ਲਿਖੋ? (2x2=4)
5. ਚਾਰ-ਪੰਜ ਸਤਰਾਂ ਵਾਲੇ ਪ੍ਰਸ਼ਨਾਂ ਦੇ ਉੱਤਰ ਦਿਉ। ਕੋਈ ਦੋ ਪ੍ਰਸ਼ਨ ਕਰੋ।
 1. ਅਧਿਆਪਕ ਕੌਮ ਦਾ ਨਿਰਮਾਤਾ ਹੈ, ਕਿਵੇਂ?
 2. ਪਿੰਡ ਵਿਚ ਦੋ ਭਰਾਵਾਂ ਦੀ ਲੜਾਈ ਕਿਉਂ ਹੋ ਰਹੀ ਸੀ?
 3. ਬੰਦਾ ਬਹਾਦਰ ਕੌਣ ਸੀ ਤੇ ਉਸ ਨੇ ਸੂਬਾ ਸਰਹੰਦ ਨੂੰ ਕਿਉਂ ਮਾਰਿਆ? (3)
6. ਬਹੁ ਵਿਕਲਪੀ ਪ੍ਰਸ਼ਨਾਂ ਦੇ ਉੱਤਰ ਚੁਣ ਕੇ ਦਿਉ।
 1. ਬੰਦਾ ਸਿੰਘ ਬਹਾਦਰ ਨੇ ਕਿਹੜੇ ਸ਼ਹਿਰ ਦੀ ਇੱਟ ਨਾਲ ਇੱਟ ਖੜਕਾਈ ਸੀ?
ਖੰਨੇ ਦੀ ਸਰਹੰਦ ਦੀ ਗੋਬਿੰਦਗੜ੍ਹ ਦੀ
 2. ਅਧਿਆਪਕ ਕਿਸ ਚੀਜ਼ ਦੀ ਵਡਮੁੱਲੀ ਖਾਨ ਹੈ?
ਵਿਦਿਆ ਦੀ ਸੋਨੇ ਦੀ ਹੀਰਿਆਂ ਦੀ
 3. ਪਿੰਡ ਦੇ ਪੜ੍ਹੇ-ਲਿਖੇ ਮੁੰਡੇ ਕਿਥੇ ਜਾਣਾ ਪਸੰਦ ਕਰਦੇ ਹਨ?
ਸ਼ਹਿਰਾਂ ਵਿਚ ਪਿੰਡਾਂ ਵਿਚ ਵਿਦੇਸ਼ਾਂ ਵਿਚ (3)
7. ਵਾਕ/ਮੁਹਾਵਰੇ : ਕੋਈ ਤਿੰਨ ਕਰੋ। (3)
ਨਿਰਮਾਤਾ, ਹੱਲਾਸ਼ੇਰੀ, ਇੱਟ ਨਾਲ ਇੱਟ ਖੜਕਾਉਣਾ, ਗਿਆਨ, ਸਿਰ ਖਾਣਾ
8. ਪੜਨਾਂਵ ਦੀ ਪ੍ਰੀਭਾਸ਼ਾ ਉਦਾਹਰਣ ਸਹਿਤ ਦੱਸ ਕੇ ਉਸ ਦੀਆਂ ਕਿਸਮਾਂ ਦੇ ਨਾਮ ਲਿਖੋ। (3)
9. ਸਮਾਨਾਰਥਕ ਸ਼ਬਦ : ਦੋ-ਦੋ ਹੋਰ ਲਿਖੋ। (3)
 1. ਅਮੀਰ
 2. ਵਰਖਾ
 3. ਦੋਸਤ
10. ਬਹੁਤੇ ਸ਼ਬਦਾਂ ਦੀ ਥਾਂ ਇੱਕ ਸ਼ਬਦ ਲਿਖੋ। (3)
 1. ਜਿਸ ਦੇ ਮਾਂ-ਬਾਪ ਮਰ ਚੁੱਕੇ ਹੋਣ।
 2. ਕਹਾਣੀ ਲਿਖਣ ਵਾਲਾ।
 3. ਜਿਸ ਨੂੰ ਸ਼ਰਾਬ ਪੀਣ ਦੀ ਆਦਤ ਪੈ ਜਾਵੇ। (2)
11. ਸ਼ਬਦ ਰੂਪਾਂਤਰ ਦੱਸੋ।
ਕਮਾਉਣਾ, ਖੇਡਣਾ
ਕਮਾਉਣੀ, ਖੇਡਣੀ

ਪ੍ਰਸ਼ਨ / ਉੱਤਰ 1-2 ਸਤਰਾਂ

1x5 = 5

ਪ੍ਰਸ਼ਨ: - ਪਹਿਲੇ ਪਿੰਡ ਤੇ ਅੱਜ ਦੇ ਪਿੰਡਾਂ ਵਿੱਚ ਕੀ ਫਰਕ ਹੈ? ਗਿਣਨਾ ਤੇ?

ਪ੍ਰਸ਼ਨ: - ਪ੍ਰਾਚੀਨ ਯੁੱਗ ਵਿੱਚ ਕੌਲ ਕੀ ਕੀ ਹੁੰਦਾ ਤੇ?

ਪ੍ਰਸ਼ਨ: - ਤਾਰਤ ਨੂੰ ਕਿਉਂ - ਕਿਉਂ ਯੋਗ ਤੇ ਕਹਿੰਦੇ?

ਪ੍ਰਸ਼ਨ: - ਸੰਤਮ ਸੰਗੀ ਪਿੰਡੀ ਕੌਣ ਸੀ? ਉਸ ਨੇ ਕਿਹੜੀ ਕਾਰ ਕੀਤੀ?

ਪ੍ਰਸ਼ਨ: - ਕੌਲਾਂ ਦੇ ਗੱਤੇ - ਗੱਤੇ ਅਧੀਕ ਹੋਣ ਤੋਂ ਕੀ ਭਾਵ ਹੈ?

② ਪ੍ਰਸ਼ਨ | ਉੱਤਰ 4-5 ਸਤਰਾਂ

2x5 = 10

ਪ੍ਰਸ਼ਨ: - ਅਧਿਆਪਕ ਦੋਸ਼ਿਣਾਂ ਦੇ ਕੀ-ਕੀ ਕੰਮ ਕਰਦੇ ਤੇ?

ਪ੍ਰਸ਼ਨ: - ਸਿਖੇ ਯਠਾਈ ਹੁੰਦੀ ਤੇ ਉਦੋਂ ਕੀ ਹੁੰਦਾ ਤੇ?

ਪ੍ਰਸ਼ਨ: - ਪਿੰਡ ਵਿੱਚ ਕੌਣ ਤੇ ਤਰਾਣਾਂ ਦੀ ਖੁਸ਼ੀ ਕਿਉਂ ਤੇ ਕੀ ਸੀ

ਪ੍ਰਸ਼ਨ: - ਚੰਦਾ ਚਾਰਦ ਕੌਣ ਸੀ ਤੇ ਉਸ ਨੇ ਕੁਝ ਯਠਾਈ ਤੇ ਕਿਉਂ ਮਾਰਿਆ?

ਪ੍ਰਸ਼ਨ: - ਅਧਿਆਪਕ ਕੌਲ ਦਾ ਨਿਰਮਾਣ ਤੇ ਕਿਉਂ?

③ ਸਦਰਾਂ | ਸੁਹਾਦਰਿਆਂ ਨੂੰ ਦੁਆਰਾਂ ਵਿੱਚੋਂ ਦੁੱਠਾਂ

ਪਿੰਡ ਤੋਂ, ਉਪਰ, ਮੇਰੇ ਕਾਫ਼ ਮੇਰੇ ਕੌਲ ਕੇ ਕੰਮ ਕਰਦੇ ,

ਪਿੰਡੇ ਕਾਫ਼ ਪਿੰਡੇ ਯਠਾਈ

ਨਿਰਮਾਣ

ਕਿੰਗ ਚਰਣੇ

1. ਮੁੰਡੇ ਦੁਰਘਾਟ ਖੰਡੇ ਜਨ ।
2. ਦਰੀਫ਼ ਵਰਤਿਐ ਇੱਠ ਖੜ੍ਹਾ ਜੀ ।
3. ਸੰਦੂਕ ਇੱਠ ਗਾਇਏ ਜਨ ।
4. ਗਾਇਏ ਨੇ ਗੀਤ ਗਾਇਆ ।

ਦਰਨ ਚਰਣੇ

1. ਮਰਦੀ ਦੀ ਗਤ ਕੰਧੀ ਤੁੰਦੀ ਤੇ ।
2. ਖੱਬਾ ਡੇਰਾ ਪਾ ਰਿਹਾ ਤੇ ।
3. ਖੇਤ ਇੱਠੇ ਗਾਂ ਚਰ ਰਹੀ ਤੇ ।
4. ਮੋਮਢੜੀ ਧੁੜ ਗਈ ਤੇ ।

ਇੱਠੇਪੀ

1. ਮਰਿਹ
2. ਖਾਫੀ
3. ਗੁਰੇ
4. ਮਾਮਰਨ

ਮੁਪ ਮਮੁਪ

1. ਮੁੰਡੇ
2. ਮੰਡੀ
3. ਪਿਊਣ
4. ਪੂਦਰ

ਘਾਤੇ ਮਧਰਾ ਦੀ ਥਾਂ ਇਕ ਮਧਰ

1. ਨੇ ਇੱਠ ਰੀਆ ਸਾਇਰਾ ਤੇ ।
2. ਕਿਹੜਾ ਕੇਸਾਂ ਤੇ ਕੁਫ਼ਰ ਵੇਰੇ ।
3. ਮਿਹੜੀ ਗੱਠ ਮਾਪਦੇ ਮਾਪ ਕਾਨ ਧੀਤੀ ਤੇ ।
4. ਸਿਯੇ ਰੁਪਏ ਪੈਸੇ ਦੇ ਨਿੱਕੇ ਘੜੇ ਸਾਢੇ ਜਨ ।

1. Choose the correct option.

A. A notable feature of 16th century was the growth of _____ in various parts of the country

i. Cities ii. Towns iii. Villages iv. None of these

B. The varna rules were prescribed by

i. Gonds ii. Brahmanas iii. Bhils iv. None of these

2. Who ranked highest among the varnas?

3. Where textiles from Gujarat were exported to?

2x2 = 4

4. Who are the tribals? Name some of the important tribes in India.

3M

5. How was the economy of India during the sultanate period?

4M

Geography

1. Choose the correct option

A. The average salinity of seawater is

i. 35/1000 ii. 38/1000 iii. 39/1000 iv. 30/1000

B. Which of the following cities is an example of a religious town?

i. Delhi ii. Haridwar iii. Roorkee iv. Vishakhapatnam

2. About what percentage of the earth is covered by land?

i. 29% ii. 28% iii. 21% iv. 27%

3. Define Ocean Currents.

4. What are the various types of settlement

2x2 = 4

5. Differentiate between land transport and water transport.

Civics

1. Blanks

_____ of India gave women equal rights with men.

2. Choose the correct option.

a. Print Media include.

i. Newspapers ii. Magazines iii. Journals iv. All of these

3. What do you mean by media?

4. What do you mean by SEWA?

2x2 = 4

5. What is the Public option? How does the media create it?

3M

6. What are the barriers to self-employed women?

4M

Class - VII
Social - Science

20

Geography ch - 18, 19

- Q① → How are waves formed? (2)
- Q② → Explain Neap tide? (2)
- Q③ → What is Terrarium? (2)
- Q④ → What do you mean by Scattered Settlements? (2)
- Q⑤ → Which is the busiest ocean route in the world? (2)
- Q⑥ → Explain the important sea routes of the world? (3)
- Q⑦ → Explain the types of tides with examples. (3)
- Q⑧ → Briefly explain the distribution of water with the help of table. (4)

History ch - 7, 8.

- Q1) → Who purchased luxury goods at low prices or did not pay at all during the period of the later mughals in the 18th century? (2)
- Q2) → Which circumstances forced the traders to hoard their wealth and lead a frugal existence? (2)
- Q3) → Which 2 cities were situated on the rivers Yamuna and Ganga? (2)
- Q4) → Define the following terms
(i) Nomads and Itinerant groups. (3)

Civics ch - 27, 28

- Q1) → Who was the first Indian woman Prime Minister known as Iron Woman of India? (2)
- Q2) → What do know about code of conduct? (2)
- Q3) → Explain modernization with examples? (3)
- Q4) → What is the impact of media on different aspects of life? (4)

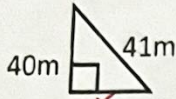
Part A

- I. One mark questions: -
1. Find the complement of 67° .
 2. Is (8, 15, 17) is Pythagorean triplets?
 3. Find the circumference if radius is 21cm.
 4. Area of triangle = $\frac{1}{2} \times \underline{\hspace{2cm}} \times$ height.
 5. Find the area of circle whose diameter is 20cm?
 6. $(\text{Hypotenuse})^2 = (\text{Base})^2 + (\underline{\hspace{2cm}})$

Part B

- II. Two marks question: -

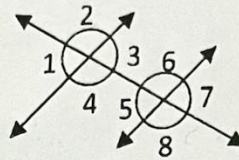
7. Find the value of x: -



8. Are 4 cm, 9cm, and 5cm can be possible length of a triangle?

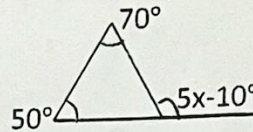
9. List all pairs of angles that fits the description: -

- i. Corresponding angles
- ii. Alternate exterior
- iii. Alternate interior
- iv. Co – interior angle



10. Find the radius of wheel if its circumference is 356 cm?

11. Find the value of x from figure: -

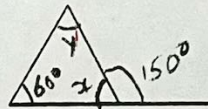


Part – C

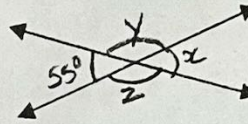
- III. Three marks question: -

12. A 15 m long ladder reached the window 12m high from ground on placing it against a wall. Find the distance of the foot of the ladder from the wall?

13. Find the value of x from figure: -



14. Find value of x, y and z from the figure: -



15. A parallelogram has height 5.6m and area 70m^2 . Find the length of its base?

Part – D

- IV. Four marks question: -

16. A door of length 2m and breadth 1m is fitted in a wall. The length of the wall is 4.5m and breadth is 3.6m. Find the cost of white washing the wall, if the rate of white washing the wall is Rs 20 per m^2 .

17. A verandah of width 2.25m is constructed all-along outside a room which is 5.5m long and 4m. Wide: -

- i. Find the area of verandah.
- ii. The cost of the cementary the floor of the verandah at the rate of its 200 per m^2 .

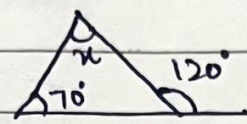
18. The diagonal of the rhombus measure 16cm and 30cm. find its perimeter.

Each question carry 2 marks

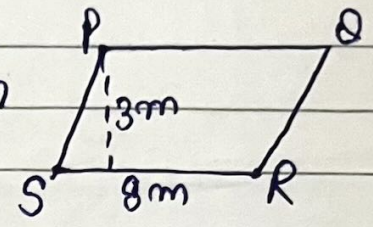
- Q1 - Find (a) 8% of what number is 15? (10)
 (b) 9 is what percent of 30?

- Q2 - Find the measure of complement angle of (a) 30° (b) 71°

- Q3 - Find the value of x



- Q4 Find the area of parallelogram

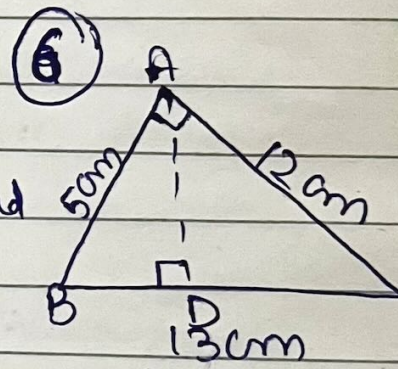


- Q5 Convert into lowest terms

- (a) 48% (b) $33\frac{1}{3}\%$

Each question carry 3 mark.

- Q1 $\triangle ABC$ is right angled at A. AD is perpendicular to BC. If $AB = 5\text{cm}$, $BC = 13\text{cm}$ and $AC = 12\text{cm}$. Find the area of $\triangle ABC$ and length of AD



- Q2. The selling price of a toy car is ₹1000. If profit made by a shopkeeper is 30%, what is the cost price of this toy?

Each question carry 4 marks (4)

- Q1 A ladder of length 17m is placed such that its foot is 8m far from a vertical wall of height 100m. How high the ladder can reach the wall?

Science Assignment

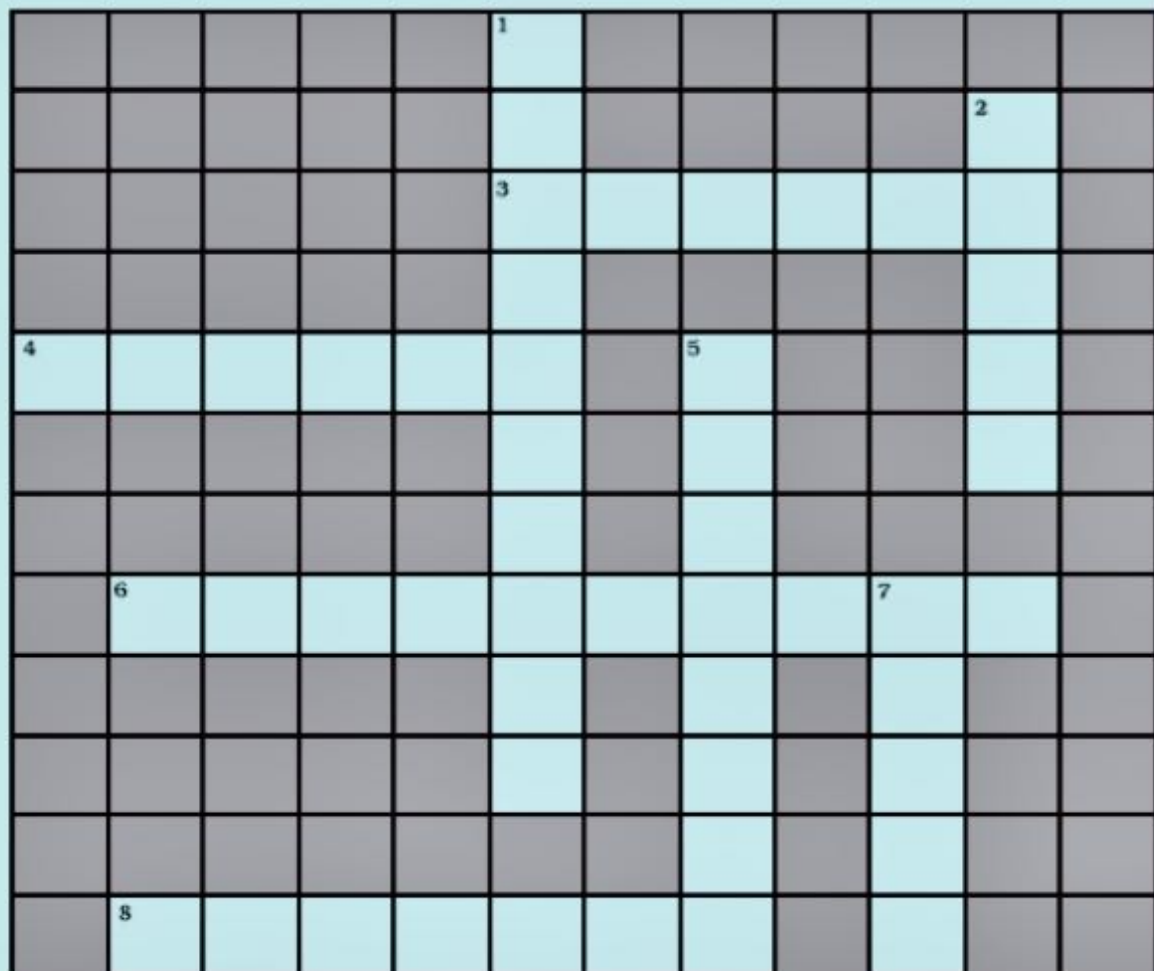
Class 7

Q1 What practices should be followed to maintain sanitation at public places?

Q2 What is meant by Waste water treatment plant?

Q3 What is eutrophication?

Q4 Here is a crossword puzzle: Good luck!



Across

3. Liquid waste products
4. Solid waste extracted in sewage treatment
6. A word related to hygiene
8. Waste matter discharged from human body

Down

1. Used water
2. A pipe carrying sewage
5. Micro-organisms which causes cholera
7. A chemical to disinfect water

Class 7 Subject-science Time- 2hr

each question carry One mark (11)

- humidity is measured of
(a) temperature (b) pressure (c) Moisture (d) Wind
- blood is carried towards heart by
(a) Arteries (b) Veins (c) capillaries (d) muscles
- The topmost layer of a forest is
(a) Forest floor (b) canopy (c) Understory (d) Herb layer
- Deforestation leads to a decrease in
(a) Rainfall (b) Pressure (c) Temperature (d) Wind
- kidney contain _____ which acts as a filter.
- _____ play a major role in a blood clotting
- A toucan has a long _____ to reach the food.
- Forest serve as a _____ lungs in nature.
- forest must be protected from insects and pets (T/F)
- Arteries carry blood from heart.(T/F)
- Polar bears have no sense of smell(T/F)

Each question carry 2 marks (10)

- what kind of climate do we observe in (a) the himalayan region (b)the Thar desert (c) Meghalaya?
- Why there is dark inside the forest?
- what is the size of human heart and function of septum in the heart?
- Name the waste product excreted by (a) large intestine (b) lungs.
- What is migration?

Each question carry 3 marks (9)

- How do elephants keep themselves cool in a hot and humid climate?
- what is blood? what are its two? Components?
- What are decomposers?

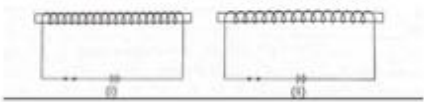
each question carry five marks (10)

- What are the ways to conserve Forest?



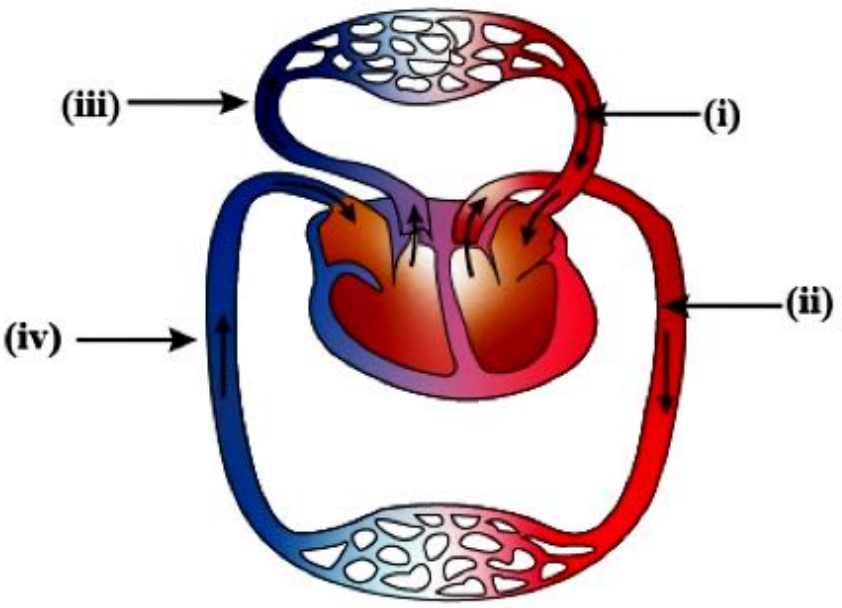
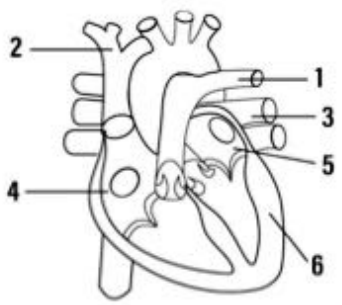
- Explain the process and label the following diagram

Q5 Look at the figure given below and answer the following questions



- (a) Which one is the stronger magnet among the fig. 1 & 2 given above and why?
- (b) why do we use iron for making an electromagnet and not steel?

Q6



Explain and label both the diagrams

3. Solve the December test question paper on your assignment sheets.

विज्ञान ने मानव को अनेक सुख दिए हैं विज्ञान के द्वारा मानव ने धरती आकाश, सर्दी, गर्मी, पर्वत, अंतरिक्ष आदि पर काबू पा लिया है मानव ने कई अविष्कार तो किए पर इसके कचरे से नदियों समुद्र और तालाबों का पानी गंदा कर दिया है पेड़ पौधे जिनसे वायु, फल, सब्जियां, लकड़ी, दवाइयां आदि मिलते हैं उन्हें भी मानव ने काट डाला है जिससे वातावरण का संतुलन बिगड़ गया है आज हमारे चारों ओर प्रदूषण ही प्रदूषण है वायु प्रदूषण, ध्वनि प्रदूषण, जल प्रदूषण, मिट्टी प्रदूषण आदि। कारखानों से निकलने वाले धुएं ने पूरा वातावरण दूषित कर दिया है हमें इस प्रदूषण पर काबू पाना होगा नहीं तो यह धरती रहने लायक नहीं।

प्रश्न उत्तर

- 1) प्रदूषण कितने प्रकार के होते हैं?
- 2) विज्ञान ने मनुष्य को क्या दिया है?
- 3) विज्ञान की सहायता से मानव ने किस पर काबू किया है?
- 4) कारखानों से निकलने वाले धुएं ने किसको दूषित किया है?
- 5) पेड़ पौधों से क्या मिलता है?

2. उत्तर पर सही का चिन्ह लगाएं

1. दीनानाथ का छोकरा क्या मंगाना चाहता था?

गुड़िया हवाई जहाज रेल का इंजन

2. मिनी की आयु कितनी थी?

आठ वर्ष पांच वर्ष दो वर्ष

3. शब्द अर्थ लिखें

नौका, मैले कुचैले

4. निम्नलिखित मौखिक प्रश्नों के उत्तर लिखें।

1. काबुलीवाला मिनी को क्या देता था?

2. प्रोफेसर साहब के लॉन में मुर्गा दिन भर क्या निगलता रहता था?

5. निम्नलिखित लिखित प्रश्नों के उत्तर दीजिए?

1. दीनानाथ होटल जाकर बिना खाये ही क्यों वापस आ गया?

2. चांदबीबी ने सोने और चांदी के सिक्के क्यों डलवाए?

3. सफल होने के लिए कवि क्या क्या त्याग ने को कह रहा है?

4.रहमत को सिपाही पकड़कर क्यों ले जा रहे थे?

6.विलोम शब्द लिखें

खुशी, वीर

7.वचन बदलो

साड़ी, वस्तु

8.निम्नलिखित मुहावरों को वाक्यों में प्रयोग करें

1.जान हथेली पर श्रुज।

2. आंख खुलना

9.निर्देशानुसार वाक्यों में परिवर्तित कीजिए

1.वह मर गया (विस्मयादिबोधक)

2.वह प्रतिदिन सैर को जाता है (नकारात्मक)

10.सही विराम चिन्ह लगाएं

1.क्या तुम बाजार जा रहे हो

2.सीता ने बाजार से केले सेब संतरे और अमरूद खरीदे

11.रिक्त स्थानों की पूर्ति करो।

1. _____ हनुमान जी का प्रिय हथियार था(गदा/गधा)।

2.इस साड़ी का _____ एक हजार रुपए है

(मूल/मूल्य)

12.किसी एक विषय पर निबंध लिखें

दीपावली या क्रिकेट मैच

13.किसी एक विषय पर पत्र लिखें

चाचा जी को उपहार के लिए धन्यवाद पत्र लिखें

या

पिताजी से पैसे मंगवाने के लिए पत्र

(2)

(2)

(2)

(2)

(2)

(2)

(2)

(4)

Assignment I

MM-20

प्र० I शब्द - अर्थ लिखें - परास्त करना,
बाँग, उत्साह

(3)

प्र० II सही विराम चिन्ह लगाएँ

(3)

(i) क्या तुम विद्यालय जा रहे हो

(ii) मुराद ने चाँदबीबी से संधि कर ली

(iii) शाबाश तुमने अपने माता-पिता का नाम रौशन कर दिया

प्र० III निम्नलिखित मौखिक प्रश्नों के उत्तर दीजिए - (3)

(i) चाँदबीबी के राज्य का क्या नाम था?

(ii) अंत में दीनानाथ ने क्या खरीदा?

(iii) किससे डरकर नौका वार नहीं होती?

प्र० IV निम्नलिखित शब्दों के दू-दो पर्यायवाची लिखो - (4)

आँख, माँ, पर्वत, सूर्य

प्र० V कचन बदलो -

खिलौना, बच्चा, कपड़ा, शपथा

प्र० VI सही उत्तर पर (✓) का चिन्ह लगाइए -

(i) पड़ोस के आदमी ने बहमत से क्या खरीदा?

शम्पुरी वजाई सूखे मैवे अलाहबादी अमरुद

Assignment II

M.M. 20

- I
- (i) निम्नलिखित लिखित प्रश्नों के उत्तर दीजिए - (3)
- (ii) अकबर के समय में दक्षिण के चार बड़े राज्यों के नाम बताइए।
- (iii) किस नए विचार ने दीनानाथ को स्तब्धना दिया?
- (iv) सफ़ेद मुरगे के प्रति काले मुरगे का व्यवहार कैसा था? काबुली(वाल) रोज़ मिनी को भेवा क्यों देता था?

II गुरु नानक देव जी पर अनुच्छेद लिखिए - (5)

- III निम्नलिखित वाक्यों में परिवर्तित करें - (3)
- (i) काले मुरगे को सफ़ेद मुरगे न दूरा दिया। (प्रश्नवाचक में)
- (ii) सुरेश इस विद्यालय में नहीं पढ़ना चाहता। (सकारात्मक में)
- (iii) श्रद्धा ने किसी को दूरा मार दिया था। (नकारात्मक में)

IV क्लोम शब्द लिखें (2)

शीघ्रा, सुदृढ़

V सही निपात भरिए - (2)

(i) मुझे मेरी माता जी से दस रूपए _____ मिले।

(ii) पापा _____ बाजार गए हैं।

CLASS – VII

1ST ASSIGNMENT BASED ON COMPUTER

Q1. Name any two types of filters in MS-Excel.

Q2. Write any two Anti-virus Software.

Q3. What is the Full form of WWW.

Q4. Name the shortcut key to print a worksheet.

Q5. List any five characteristics of a computer.

Q6. What is Internet.

Q7. What is Mail-merge.

Q8. Name any two types of cells referencing.

Q9. What is a Control box.

Q10. What is a Hyperlink.

ASSIGNMENT -2

Q-1 How do you open MS word?

Q-2 Give terms used by MS word. What is extension of file in MS-Word?

Q-3 Which storage device is internal part of computer?

Q-4 Where a computer stores its Data?

Q-5 Write name of different types of key on keyboard?

Q-6 Explain input and output units?

Q-7 What is the full form of ROM?

Q-8 Define DVD?

Q-9 Unscramble words: - ATBLE, ENMV

Q-10 Write full form of CPU?

CLASS VIII

1ST ASSIGNMENT BASED ON COMPUTER

Q1. Write different types of charts available in MS-Excel.

Q2. What are the three main stages of mail merge.

Q3. List some of the shortcut keys to insert special characters to the word document.

Q4. What is antivirus?

Q5. What are Headers and Footers?

Q6. Write the shortcut of-:

- a) To bold the Text b) To save a document**

Q7. List various components of a database?

Q8. Name the top most bar in the Notepad window.

Q9. Name the bar that has buttons like file, Edit, Help etc.

Q10. Write the steps to open the Notepad.

II ASSIGNMENT

Q1. What is control panel.

Q2. How is Internet used in the field of education.

Q3. What is the full form of HTTP.

Q4. What is the extension of MS-Excel.

Q5. Write the steps to buy online tickets.

Q6. What are the different fields where computers are used.

Q7. Write keyboard shortcuts for the following.

a) To open a document b) To Print a document

Q8. Write the full form of ALU.

Q9. Which Computer is used in Weather forecasting.

Q10. Define Software.

